



GERMAN IMPLANT SYSTEM

PRODUCT CATALOG
2023 / 24



CE
1984



CONTENTS



GENERAL

About Us

B6PRO Applications

3

4



SURGICAL

SLA Surface

Drilling Protocol

Packaging Handling

B6pro Design

Implants Overview.....

Ø2.9 mm Slim Implant.....

Cover Screw, Transfer Piece, Healing Caps.....

5

6

7

9

10

11

12



PROSTHETICS

Abutments

Cement Retained Abutments.....

Temporary Abutments.....

Screw Retained (Multi-unit) Abutments

Locator Abutments

Ti-base Abutments

Digital Analogs.....

Pre-mill Abutments.....

Implant Level Impression Components and Analogs

Abutment Level Impression Components and Analogs.....

13

14

15

16-17

18-20

21-24

26

28

29-30

31-32



INTRUMENTS and ACCESSORIES

Surgical Cassette

Stopper Kit

Sinus Osteotome Kit

Prosthetic Kit.....

Ridge Expander Kit Screw Removal Kit

All on Four & Abutment Selection Kit

Digital Libraries

33-36

37

38

47

39

40

41



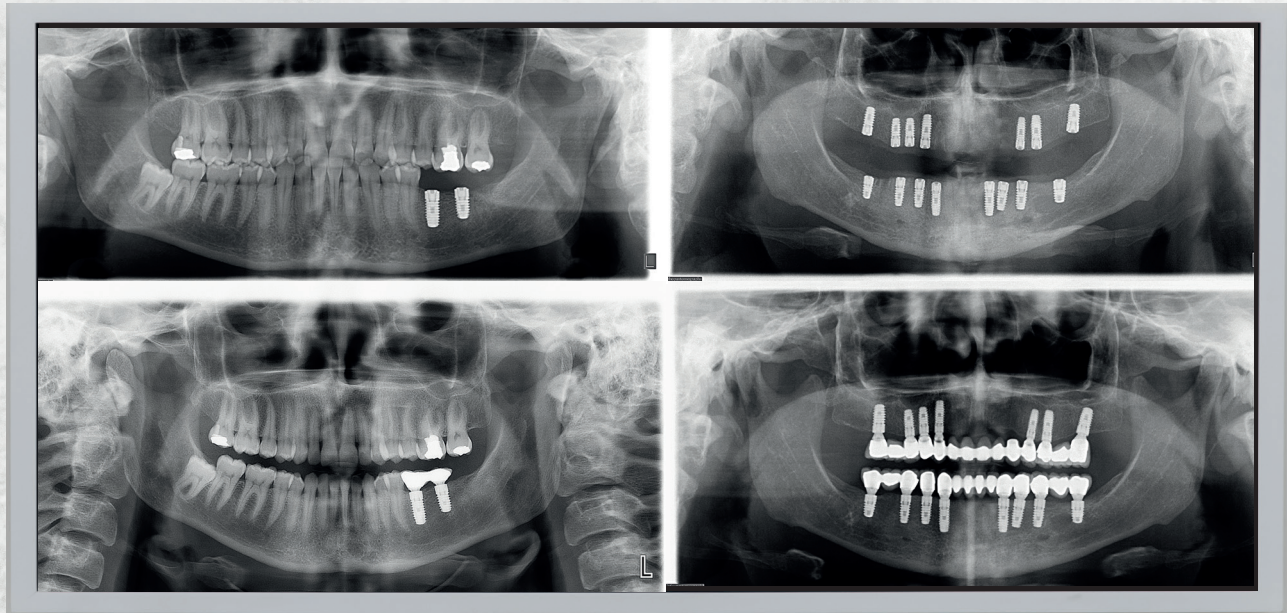
MISSION

Proimtech Inc. aims to be a healthcare leading firm that follows the latest advances in technology, keeps innovations alive adding new values every passing day with R&D studies and works for providing high quality of health and life for everybody.



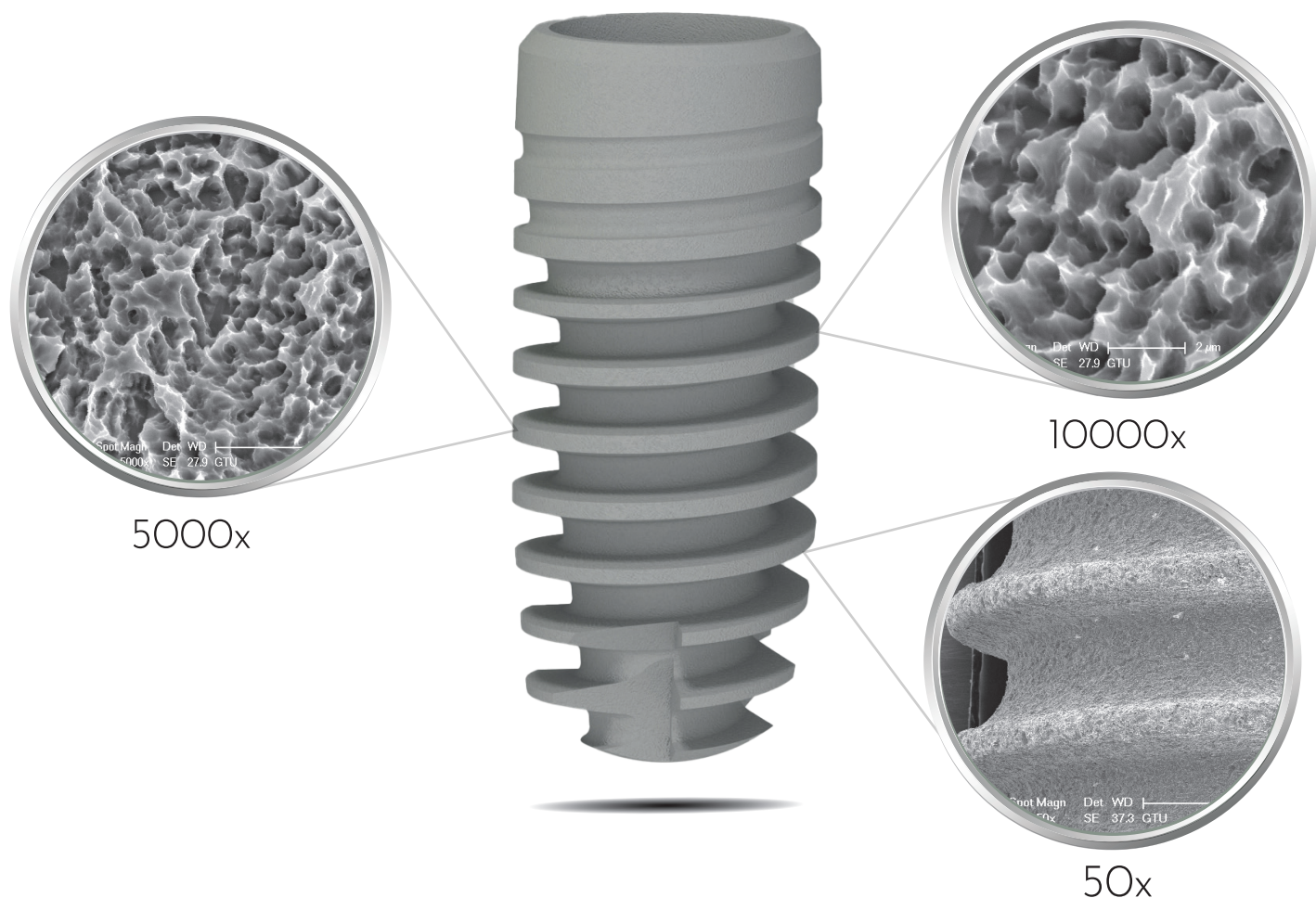
VISION

Our main target is to be a trustworthy and global company in the dental sector by providing innovative, scientific and highly qualified production service.

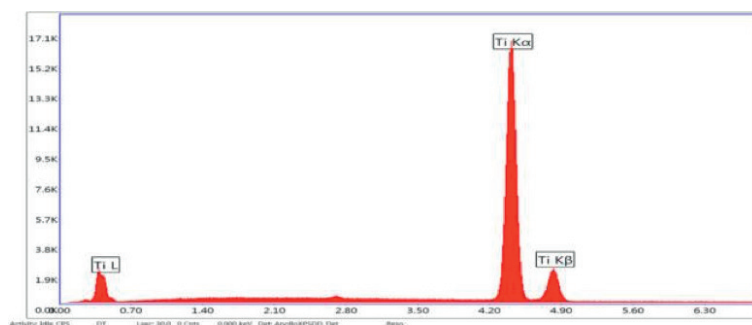


As an expected result of our sense of manufacturing that does not compromise quality and scientificness, success of our implants was proved with 7 years clinical follow-up. In accordance with the scientific literature, B6pro applications does not cause periimplantitis, pathological marginal bone loss, screw loosening etc.

Sandblasted, Large Grit, Acid-Etched (SLA) Surface

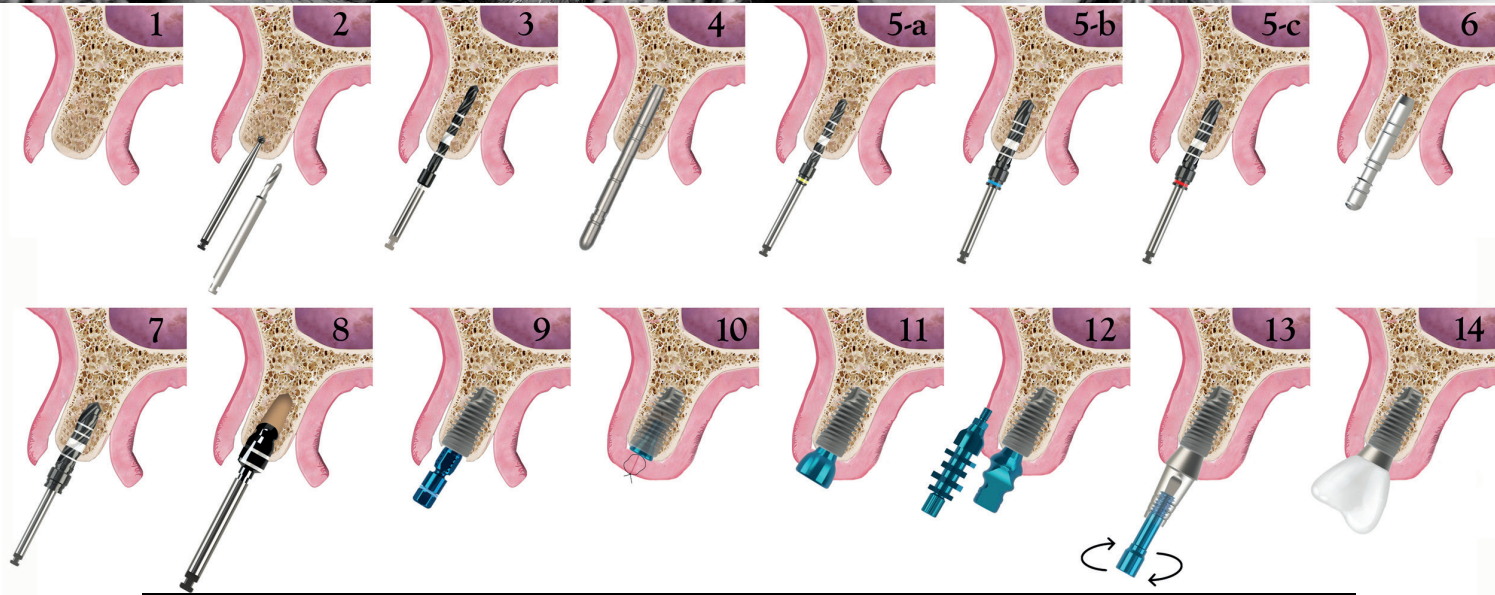


B6pro implants have an ideal homogenous rough surface with $1.8 \mu\text{m Ra}$ as a consequence of sandblasting and double etching process. This SLA surface provides the best degree of roughness for osseointegration by increasing the implant-bone contact area.



EDAX (Energy Dispersive X-ray) analysis showed that no element was found causing biocontamination and influencing osseointegration negatively.

DRILLING PROTOCOL



With Surgical Contra- Angle Handpiece (20:1);
Ideal drilling (preparing the implant drill hole) speed: 800- 900 rpm / Ideal implant placement speed: 30- 40 rpm, torque: 30- 40 Ncm

1. The mucoperiosteal flap is reflected and the bone is exposed.
2. The implant position is marked with a marking drill.
3. The precise depth of the implant is determined by making an implant bed with a pilot drill.
4. The depth and angle of the implant is controlled with an alignment pin.
- 5 (a-c). The implant bed is widened sequentially with the drills till the final drill that is appropriate for the planned implant size and length.
6. The implant bed depth and angular accuracy is controlled with a parallel pin.
7. The implant bed is ready for implant placement after final drill.
8. To prevent the compressive strengths and marginal bone loss around the neck of implant, the cortical drills must be used specially for dense bones.

9. The implant is taken from its sterile vial with the aid of a ratchet adapter and is placed into the implant bed using a ratchet adapter turning it clockwise or a handpiece with a maximum speed of 40 rpm and maximum torque of 40Ncm.
10. Following the placement of implant, the cover screw is placed and tightened turning it clockwise to prevent the soft tissue ingrowth and then mucoperiosteal flap is closed.
11. After the 8-12 weeks osseointegration period, implant is exposed, cover screw is removed and appropriate healing cap is placed for gingival adaptation.
12. Following gingival adaptation an impression is taken with an open or closed tray impression technique.
13. The appropriate abutment is selected from the abutment options and is fixed using abutment screw at a torque of 30 Ncm.
14. The crown prepared is cemented or screwed over the abutment.

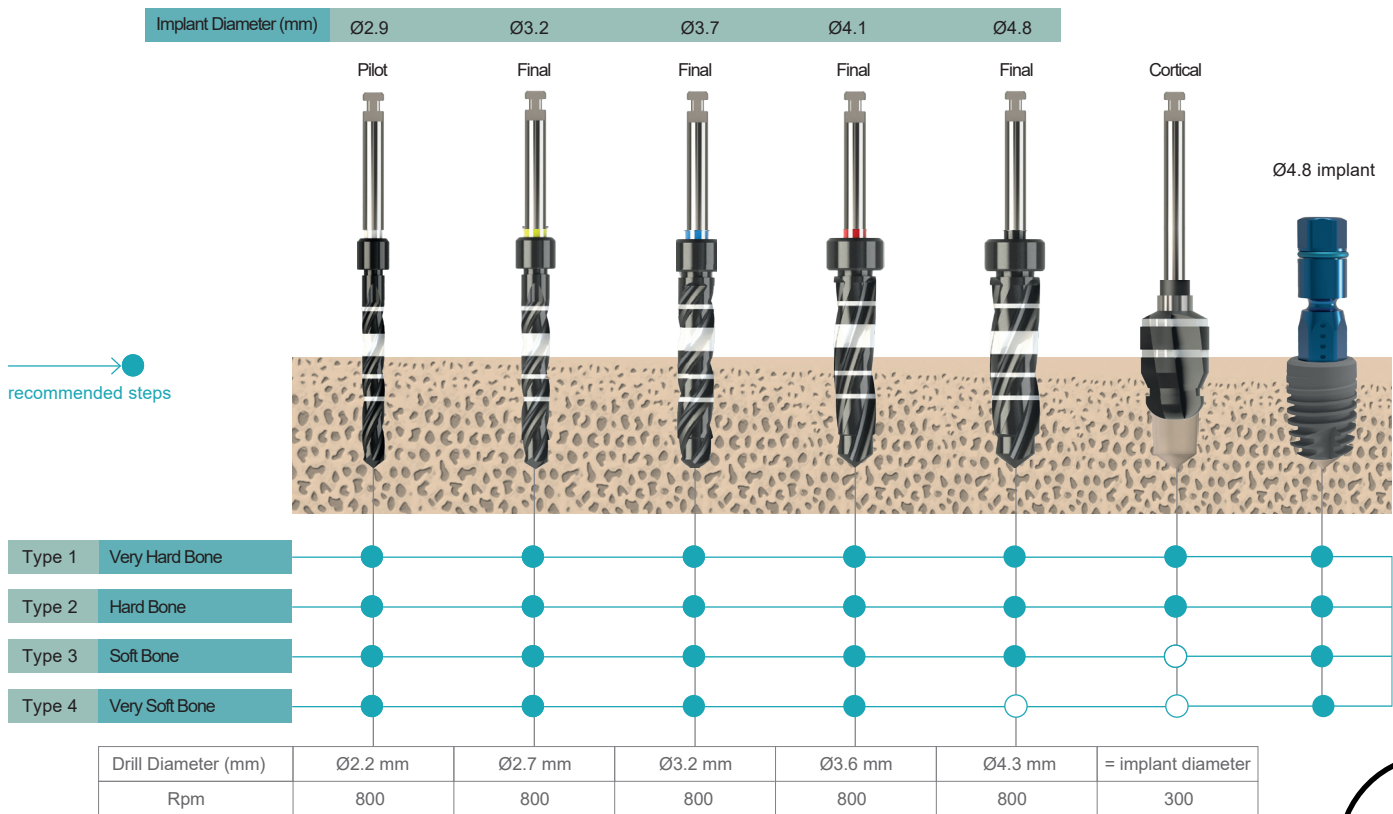


Figure 1. Recommended drilling procedure for placement of bone level implants based on bone types.

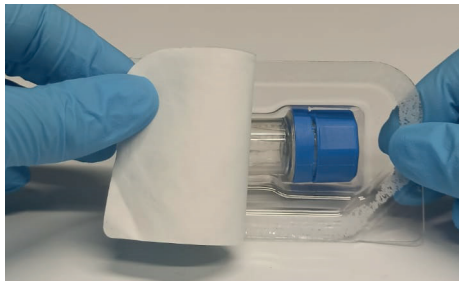
PACKAGING HANDLING



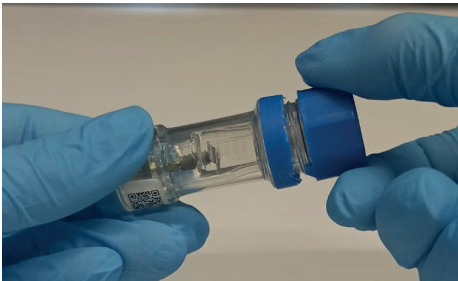
The box is opened.



The blister pack is removed from the box.



The tyvek paper is removed.



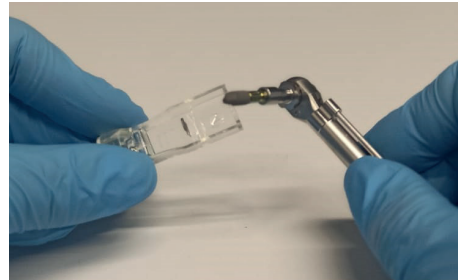
The cap of the implant vial is opened turning it clockwise. Do not use a product with a broken security ring. The sealing ring inside of the cap provides extra security in addition to tyvek paper to ensure sterilization.



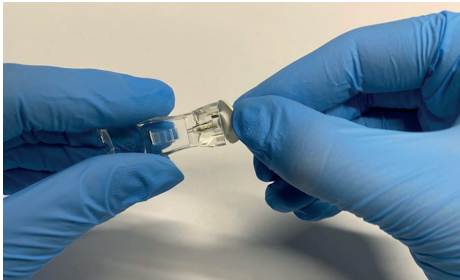
The implant is placed on a sterile table after it is opened. A medically compatible transparent plastic body protects the implant from a contact with foreign materials.



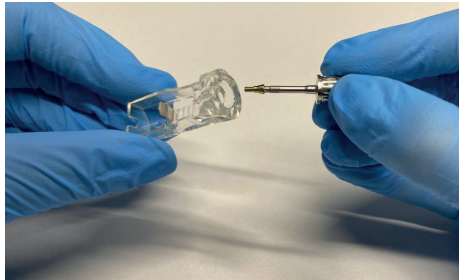
The insertion tool is attached to the color coded transfer piece (yellow or blue) that is mounted on the implant. Delicate manufacturing and the silicon ring prevents implant falling into the mouth.



The implant is removed from the transparent plastic body turning the ratchet 90° angle. The transfer piece is removed by pulling upwards following the placement of implant into implant bed.



The silicon cap is removed to take the cover screw from the box.

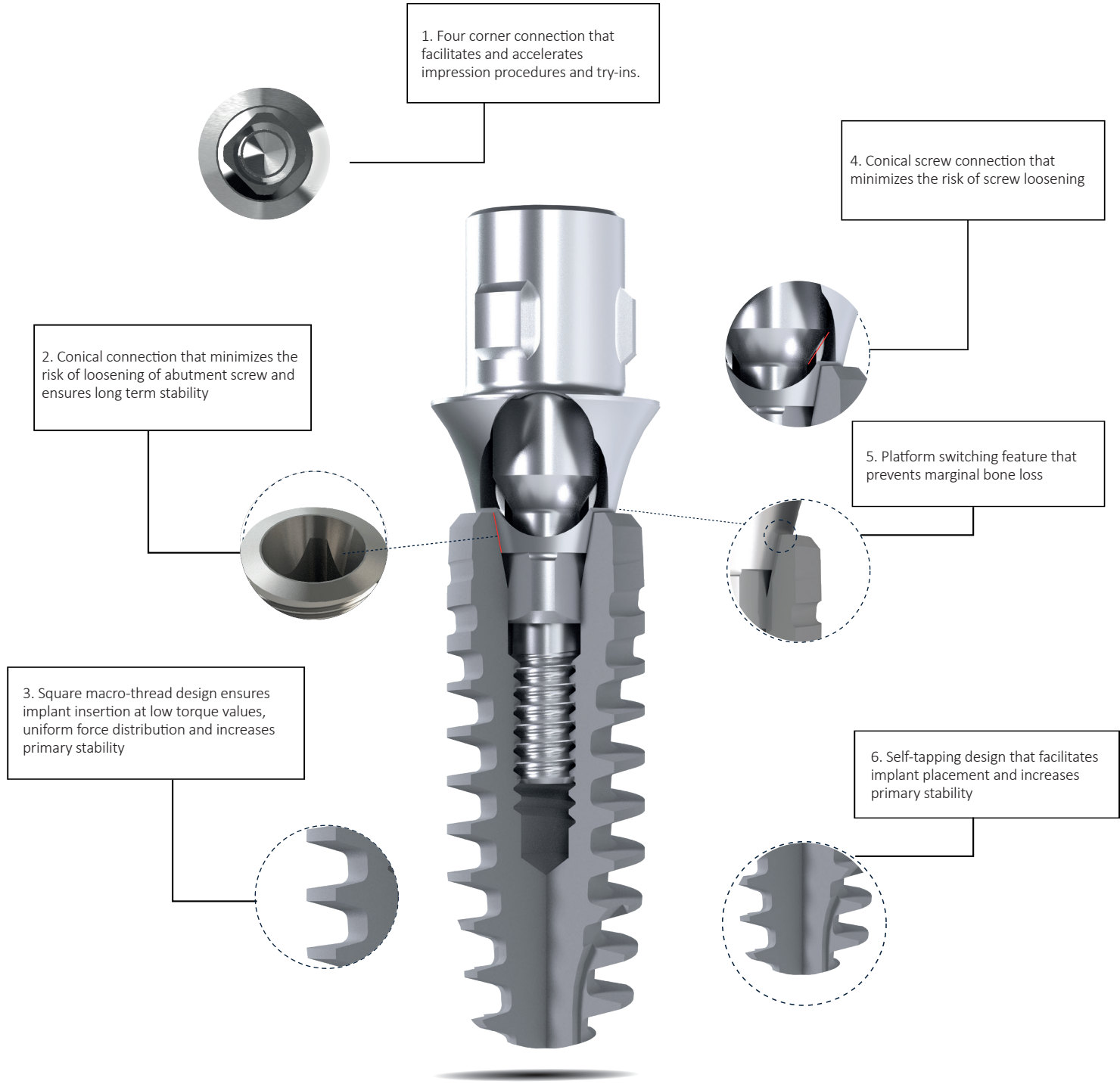


The screwdriver (SCS) is mounted on the cover screw. It is gently pressed and removed pulling upwards.

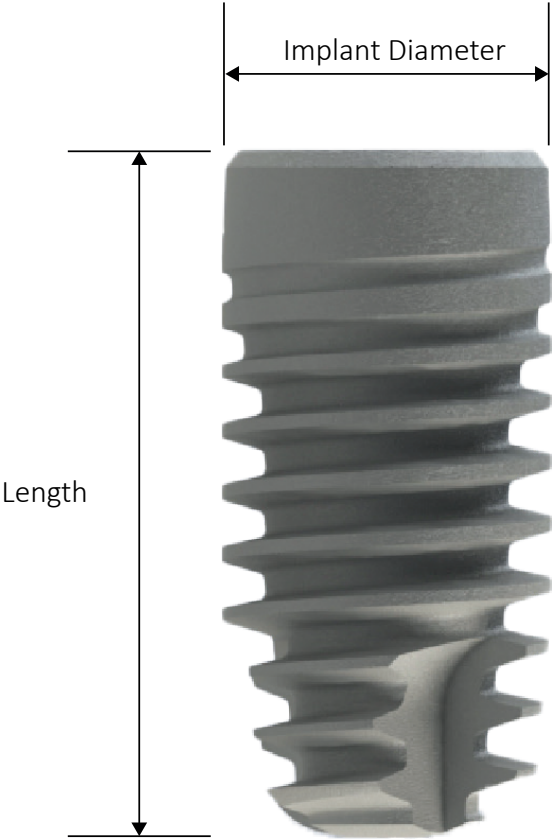


“Laughter is a tranquilizer with no side effects.” Arnoldt Glashow

Smile with B6pro



B6pro implants were designed for a natural look and sensation providing great flexibility and a balanced prosthetic portfolio for every indication. It stands for excellent clinical performance, superior esthetics and high patient satisfaction in daily practice.



Product No.	Implant Diameter	Length	
G-PBL2910	Ø 2.9 mm	10 mm	Slim (SP, M1.4)
G-PBL2912		12 mm	
G-PBL2914		14 mm	
G-PBL3208	Ø 3.2 mm	8 mm	Narrow Platform (yellow) (NP, M1.6)
G-PBL3210		10 mm	
G-PBL3212		12 mm	
G-PBL3214		14 mm	
G-PBL3708	Ø 3.7 mm	8 mm	Regular Platform (Blue) (RP, M1.8)
G-PBL3710		10 mm	
G-PBL3712		12 mm	
G-PBL3714		14 mm	
G-PBL4108	Ø 4.1 mm	8 mm	Regular Platform (Blue) (RP, M1.8)
G-PBL4110		10 mm	
G-PBL4112		12 mm	
G-PBL4114		14 mm	
G-PBL4808	Ø 4.8 mm	8 mm	
G-PBL4810		10 mm	
G-PBL4812		12 mm	

Ø2.9 mm Slim (SP) Implant

- Ø2.9 mm slim implant is specifically engineered to address esthetic challenges in compromised situations such as narrow interdental spaces or reduced bone height
- Enjoy the privilege of the Ø2.9 mm slim implant in the aesthetic zone and where narrow diameter implant use is indicated
- Easy handling
- Ensured precision against rotation and long-term mechanical stability
- Guidance by 4 grooves for precise positioning
- 8° conical connection

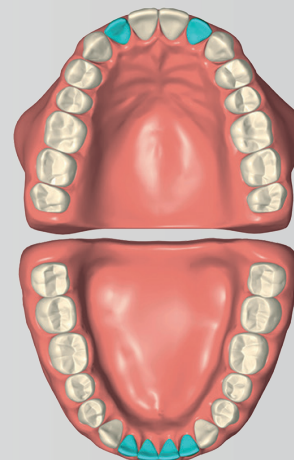
Do not use
in bridge restorations !



G-PBL2910	G-PBL2912	G-PBL2914	Product No.
10	12	14	Length (mm)

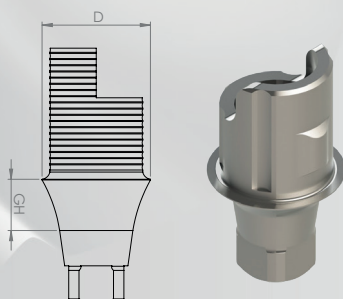
Indications

Lateral incisors (maxilla)



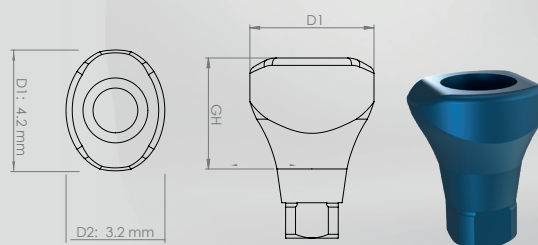
Centreal and lateral incisors (mandible)

Ti - Base Angled Abutments (for Ø2.9 implant)



D	GH	Product No.
3.5 mm	1 mm	BLATIBLAGH1SP
	2 mm	BLATIBLAGH2SP
	3 mm	BLATIBLAGH3SP

Healing Caps



D1 x D2	GH	Product No.
4.2 x 3.2 mm	2.5 mm	BLHCH25SP
	4 mm	BLHCH4SP
	6 mm	BLHCH6SP

Impression Post Open Tray

Product No.
IP0021



Impression Post Closed Tray

Product No.
IP0023



Analog

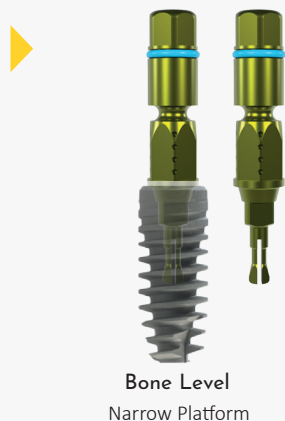
Product No.
IP0025



Transfer Pieces

Transfer Piece for $\varnothing 3.2$ and $\varnothing 3.7$ Bone Level Implants

PTPNP



Transfer Piece for $\varnothing 4.1$ and $\varnothing 4.8$ Bone Level Implants

PTPRP



The transfer piece has an easily removable system following the implant placement. It has a safety ring breaking at a force of 125 Ncm in dense bone preventing marginal bone loss and protecting the inner surface of implant.

Cover Screws

Cover Screws for $\varnothing 3.2$ and $\varnothing 3.7$ Bone Level Implants

PCSNP



Cover Screws for $\varnothing 4.1$ and $\varnothing 4.8$ Bone Level Implants

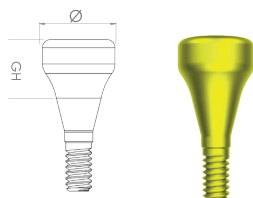
PCSRP



Compatible with inner structure of the implant with leakproof feature

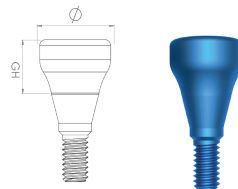
Healing Caps

Narrow Platform Healing Caps
($\varnothing 3.2$ and $\varnothing 3.7$ Implants)



Diameter (mm)	Gingival Height (GH)	Product No.
$\varnothing 3.5$	3 mm	BLHC35H3NP
$\varnothing 3.5$	4 mm	BLHC35H4NP
$\varnothing 3.5$	6 mm	BLHC35H6NP
$\varnothing 4.5$	3 mm	BLHC45H3NP
$\varnothing 4.5$	4 mm	BLHC45H4NP
$\varnothing 4.5$	6 mm	BLHC45H6NP

Regular Platform Healing Caps
($\varnothing 4.1$ and $\varnothing 4.8$ Implants)



Diameter (mm)	Gingival Height (GH)	Product No.
$\varnothing 5.0$	3 mm	BLHC50H3RP
$\varnothing 5.0$	4 mm	BLHC50H4RP
$\varnothing 5.0$	6 mm	BLHC50H6RP
$\varnothing 6.5$	3 mm	BLHC65H3RP
$\varnothing 6.5$	4 mm	BLHC65H4RP
$\varnothing 6.5$	6 mm	BLHC65H6RP

Screw Retained (Multi-Unit) Healing Cap



Diameter (mm)	Gingival Height (GH)	Product No.
$\varnothing 4.5$	4.9 mm	BLHCMLT



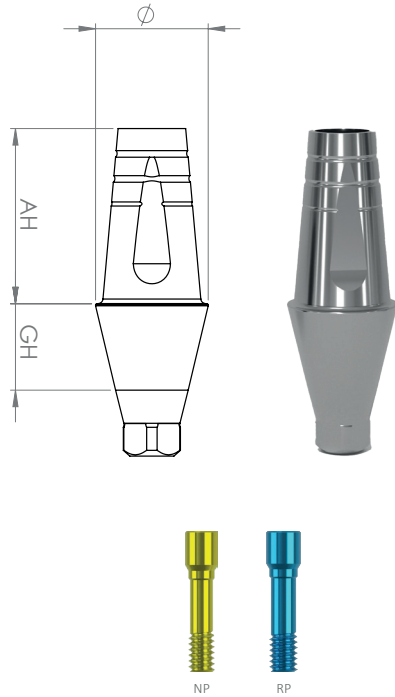
ABUTMENTS

The loading torque value on all abutments is **30 Ncm**.

For multi-unit abutments, the loading torque is **30 Ncm** and the secondary occlusal top screw torque is **15 Ncm**.

Cement Retained Abutments

Straight Abutments

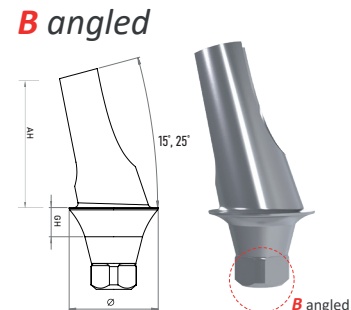
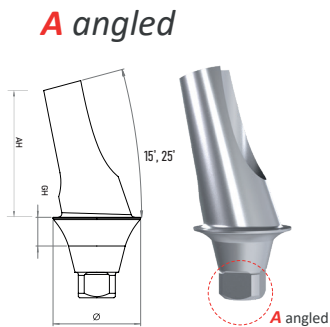


Narrow Platform

Regular Platform

Diameter (mm)	Ging. Height (GH)	AH	Product No.
Ø3.5	1 mm	5.5 mm	BLSA35GH1AH55NP
Ø3.5	2 mm	5.5 mm	BLSA35GH2AH55NP
Ø3.5	3 mm	5.5 mm	BLSA35GH3AH55NP
Ø3.5	4 mm	5.5 mm	BLSA35GH4AH55NP
Ø3.5	5 mm	5.5 mm	BLSA35GH5AH55NP
Ø4.5	1 mm	7 mm	BLSA45GH1AH7NP
Ø4.5	2 mm	7 mm	BLSA45GH2AH7NP
Ø4.5	3 mm	7 mm	BLSA45GH3AH7NP
Ø4.5	4 mm	7 mm	BLSA45GH4AH7NP
Ø4.5	5 mm	7 mm	BLSA45GH5AH7NP
Ø5	1 mm	7 mm	BLSA50GH1AH7RP
Ø5	2 mm	7 mm	BLSA50GH2AH7RP
Ø5	3 mm	7 mm	BLSA50GH3AH7RP
Ø5	4 mm	7 mm	BLSA50GH4AH7RP
Ø5	5 mm	7 mm	BLSA50GH5AH7RP
Ø6	1 mm	7 mm	BLSA60GH1AH7RP
Ø6	2 mm	7 mm	BLSA60GH2AH7RP
Ø6	3 mm	7 mm	BLSA60GH3AH7RP
Ø6	4 mm	7 mm	BLSA60GH4AH7RP
Ø6	5 mm	7 mm	BLSA60GH5AH7RP

Angled Abutments



Narrow Platform

Regular Platform

Angle	Ging. Height (GH)	AH	Product No. A angled / B angled
15°	1 mm	7 mm	BLAAA15GH1AH7NP / BLAAB15GH1AH7NP
15°	2 mm	7 mm	BLAAA15GH2AH7NP / BLAAB15GH2AH7NP
15°	3 mm	7 mm	BLAAA15GH3AH7NP / BLAAB15GH3AH7NP
15°	4 mm	7 mm	BLAAA15GH4AH7NP / BLAAB15GH4AH7NP
25°	1 mm	7 mm	BLAAA25GH1AH7NP / BLAAB25GH1AH7NP
25°	2 mm	7 mm	BLAAA25GH2AH7NP / BLAAB25GH2AH7NP
25°	3 mm	7 mm	BLAAA25GH3AH7NP / BLAAB25GH3AH7NP
25°	4 mm	7 mm	BLAAA25GH4AH7NP / BLAAB25GH4AH7NP
15°	1 mm	7 mm	BLAAA15GH1AH7RP / BLAAB15GH1AH7RP
15°	2 mm	7 mm	BLAAA15GH2AH7RP / BLAAB15GH2AH7RP
15°	3 mm	7 mm	BLAAA15GH3AH7RP / BLAAB15GH3AH7RP
15°	4 mm	7 mm	BLAAA15GH4AH7RP / BLAAB15GH4AH7RP
25°	1 mm	7 mm	BLAAA25GH1AH7RP / BLAAB25GH1AH7RP
25°	2 mm	7 mm	BLAAA25GH2AH7RP / BLAAB25GH2AH7RP
25°	3 mm	7 mm	BLAAA25GH3AH7RP / BLAAB25GH3AH7RP
25°	4 mm	7 mm	BLAAA25GH4AH7RP / BLAAB25GH4AH7RP

A and B type angled abutments attached to implants in 8 different positions are produced in order to increase placement options. Thus, the need for abutment preparation is reduced.

Temporary Abutments

Temporary Abutments

	Diameter (mm)	GH	AH	Crown (Lock) Product No.	Bridge (Nolock) Product No.
Narrow Platform	Ø4.3	1 mm	9.7mm	BLTAGH1LNP	BLTAGH1NLNP
	Ø4.3	2 mm	9.7mm	BLTAGH2LNP	BLTAGH2NLNP
	Ø4.3	3 mm	9.7mm	BLTAGH3LNP	BLTAGH3NLNP
	Ø4.3	4 mm	9.7mm	BLTAGH4LNP	BLTAGH4NLNP
	Ø4.3	5 mm	9.7mm	BLTAGH5LNP	BLTAGH5NLNP
Regular Platform	Ø5.0	1 mm	9.7mm	BLTAGH1LRP	BLTAGH1NLRP
	Ø5.0	2 mm	9.7mm	BLTAGH2LRP	BLTAGH2NLRP
	Ø5.0	3 mm	9.7mm	BLTAGH3LRP	BLTAGH3NLRP
	Ø5.0	4 mm	9.7mm	BLTAGH4LRP	BLTAGH4NLRP
	Ø5.0	5 mm	9.7mm	BLTAGH5LRP	BLTAGH5NLRP

Multi-unit Temporary Abutments

Crown

BLMLTAL

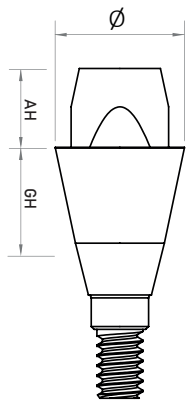
Bridge

BLMLTANL



Screw Retained (Multi-unit) Abutments

Straight Multi-unit Abutments



Narrow Platform

Regular Platform

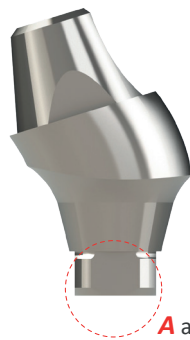
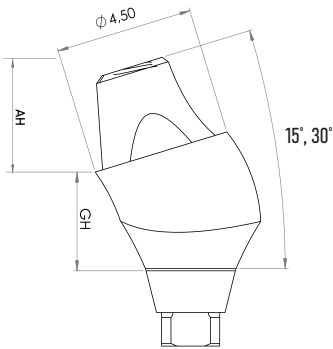
Diameter (mm)	Ging. Height (GH)	AH	Product No.
Ø4.5	1 mm	2.7 mm	BLMLTSA45GH1NP
Ø4.5	2 mm	2.7 mm	BLMLTSA45GH2NP
Ø4.5	3 mm	2.7 mm	BLMLTSA45GH3NP
Ø4.5	4 mm	2.7 mm	BLMLTSA45GH4NP
Ø4.5	5 mm	2.7 mm	BLMLTSA45GH5NP
Ø4.5	1 mm	2.7 mm	BLMLTSA45GH1RP
Ø4.5	2 mm	2.7 mm	BLMLTSA45GH2RP
Ø4.5	3 mm	2.7 mm	BLMLTSA45GH3RP
Ø4.5	4 mm	2.7 mm	BLMLTSA45GH4RP
Ø4.5	5 mm	2.7 mm	BLMLTSA45GH5RP



Screw Retained (Multi-unit) Abutments

Angled Multi-unit Abutments

A angled abutments



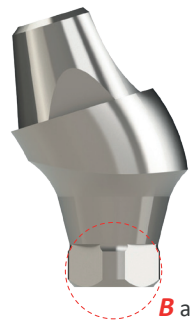
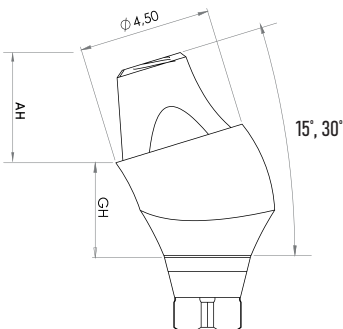
Narrow Platform

Regular Platform

A angled

Angle	Ging. Height (GH)	AH	Product No.
15°	1 mm	2.7 mm	BLMLTAAA15GH1NP
15°	2 mm	2.7 mm	BLMLTAAA15GH2NP
15°	3 mm	2.7 mm	BLMLTAAA15GH3NP
15°	4 mm	2.7 mm	BLMLTAAA15GH4NP
30°	1 mm	2.7 mm	BLMLTAAA30GH1NP
30°	2 mm	2.7 mm	BLMLTAAA30GH2NP
30°	3 mm	2.7 mm	BLMLTAAA30GH3NP
30°	4 mm	2.7 mm	BLMLTAAA30GH4NP
15°	1 mm	2.7 mm	BLMLTAAA15GH1RP
15°	2 mm	2.7 mm	BLMLTAAA15GH2RP
15°	3 mm	2.7 mm	BLMLTAAA15GH3RP
15°	4 mm	2.7 mm	BLMLTAAA15GH4RP
30°	1 mm	2.7 mm	BLMLTAAA30GH1RP
30°	2 mm	2.7 mm	BLMLTAAA30GH2RP
30°	3 mm	2.7 mm	BLMLTAAA30GH3RP
30°	4 mm	2.7 mm	BLMLTAAA30GH4RP

B angled abutments



Narrow Platform

Regular Platform

B angled

Angle	Ging. Height (GH)	AH	Product No.
15°	1 mm	2.7 mm	BLMLTAAB15GH1NP
15°	2 mm	2.7 mm	BLMLTAAB15GH2NP
15°	3 mm	2.7 mm	BLMLTAAB15GH3NP
15°	4 mm	2.7 mm	BLMLTAAB15GH4NP
30°	1 mm	2.7 mm	BLMLTAAB30GH1NP
30°	2 mm	2.7 mm	BLMLTAAB30GH2NP
30°	3 mm	2.7 mm	BLMLTAAB30GH3NP
30°	4 mm	2.7 mm	BLMLTAAB30GH4NP
15°	1 mm	2.7 mm	BLMLTAAB15GH1RP
15°	2 mm	2.7 mm	BLMLTAAB15GH2RP
15°	3 mm	2.7 mm	BLMLTAAB15GH3RP
15°	4 mm	2.7 mm	BLMLTAAB15GH4RP
30°	1 mm	2.7 mm	BLMLTAAB30GH1RP
30°	2 mm	2.7 mm	BLMLTAAB30GH2RP
30°	3 mm	2.7 mm	BLMLTAAB30GH3RP
30°	4 mm	2.7 mm	BLMLTAAB30GH4RP

Abutment Screw

Product No.

Narrow Platform AMLTASNP
Regular Platform AMLTASRP

Plastic Copings



Occlusal Screw



Loading torque **15 Ncm**

Loading torque **30 Ncm**

LOC-BIL[®] Retentive System

This connection is specially designed for you and your patient.
Feel the comfort and reliability.



DLC SURFACE

DLC coated locator abutments show less bacteria and calculus accumulation thanks to its scratch-free surface hardness and smoothness.



DIVERGENCE COMPENSATION

In combination with the angled Loc-bil[®] abutments they can be used to compensate for divergences of up to 70° between the implants.

GINGIVA HEIGHTS

There is 5 gingiva heights for the straight and angled abutments

PEEK MATRICES

PEEK inserts offered sufficient retention for long-term use over 30,000 insertion-separating cycles, both for orthogonal and tilted implants.

Straight and 15° Angled Loc-bil[®] Abutments



*All angled Loc-bil abutments are available in types A and B, where they can be seated on the implant in 8 different positions.



PERFORMANCE

Excellent material, delivering high wear resistance and smoothness



FLEXIBILITY

Flexibility to compensate for poorly positioned implants



USABILITY

All components of the lock system are easy to use



PATIENT COMFORT

Provides much more comfort for your patient than other hybrid systems

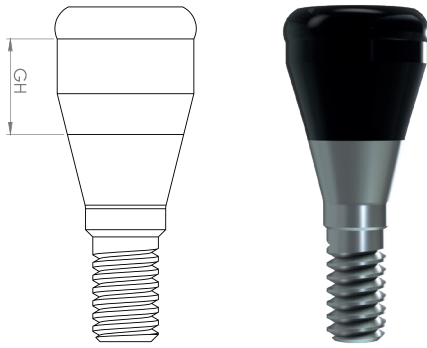


QUALITY

Trust Loc-bil quality and the science

Locator (Loc-bil®) Abutments

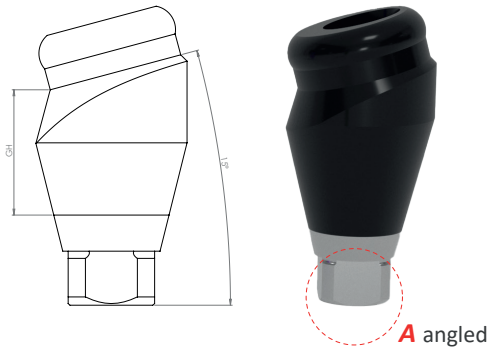
Straight Abutments



	Ging. Height (GH)	Product No.
Narrow Platform	2 mm	BLOCGH2NP
	3 mm	BLOCGH3NP
	4 mm	BLOCGH4NP
	5 mm	BLOCGH5NP
	6 mm	BLOCGH6NP
Regular Platform	2 mm	BLOCGH2RP
	3 mm	BLOCGH3RP
	4 mm	BLOCGH4RP
	5 mm	BLOCGH5RP
	6 mm	BLOCGH6RP

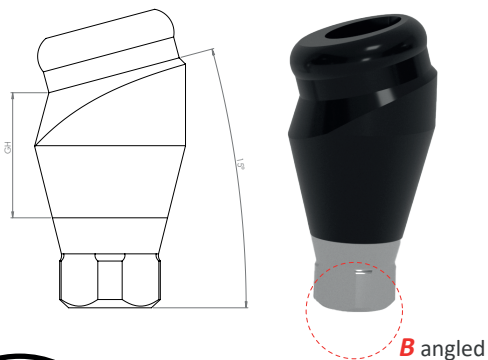
Angled Abutments

A angled abutments



	Angle	Ging. Height (GH)	Product No.
Narrow Platform	15°	2 mm	BLOCA15GH2NP
	15°	3 mm	BLOCA15GH3NP
	15°	4 mm	BLOCA15GH4NP
	15°	5 mm	BLOCA15GH5NP
	15°	6 mm	BLOCA15GH6NP
Regular Platform	15°	2 mm	BLOCA15GH2RP
	15°	3 mm	BLOCA15GH3RP
	15°	4 mm	BLOCA15GH4RP
	15°	5 mm	BLOCA15GH5RP
	15°	6 mm	BLOCA15GH6RP

B angled abutments

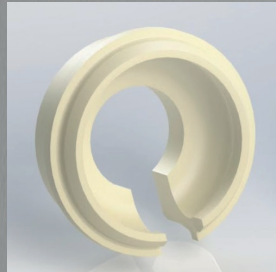


	Angle	Ging. Height (GH)	Product No.
Narrow Platform	15°	2 mm	BLOCB15GH2NP
	15°	3 mm	BLOCB15GH3NP
	15°	4 mm	BLOCB15GH4NP
	15°	5 mm	BLOCB15GH5NP
	15°	6 mm	BLOCB15GH6NP
Regular Platform	15°	2 mm	BLOCB15GH2RP
	15°	3 mm	BLOCB15GH3RP
	15°	4 mm	BLOCB15GH4RP
	15°	5 mm	BLOCB15GH5RP
	15°	6 mm	BLOCB15GH6RP

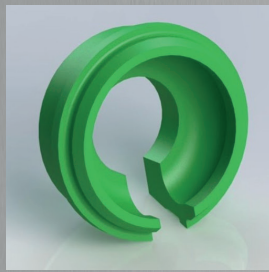
Locator (Loc-bil®)

PEEK Inserts and Instruments

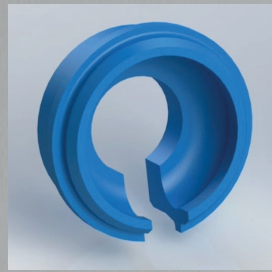
PEEK Retention Inserts are Compatible with All Popular Implant Locator Systems*



Light
1130 g



Medium
1820 g



Strong
2260 g

Easy - to - Use Hand Tools

PEEK retention inserts can be easily inserted or removed into the matrix housing in a few seconds with a stress-free handling.

The Loc-bil® matrix system with its newly developed technology is a prefabricated connector for retaining removable restorations on universal locator abutments. The matrix system is available titanium housing + coloured PEEK. In combination with the Loc-bil® abutment the matrix system has an impressive service life and functionality.



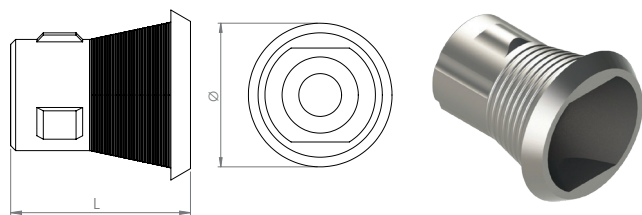
B6pro® Loc-bil® metal housing and PEEK inserts should be used together.



Ti-BASE ABUTMENTS

Multi-unit Ti-Base Abutments

Crown



Height (L)

Product No.

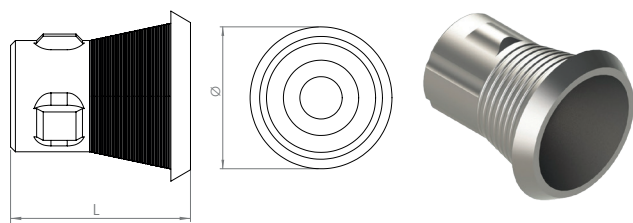
3.5 mm

BLSMLTIBLAH35

5.5 mm

BLSMLTIBLAH55

Bridge



Height (L)

Product No.

3.5 mm

BLSMLTIBNLAH35

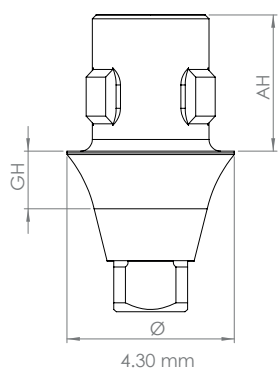
5.5 mm

BLSMLTIBNLAH55

Ti-Base Straight Abutments

Crown

Straight



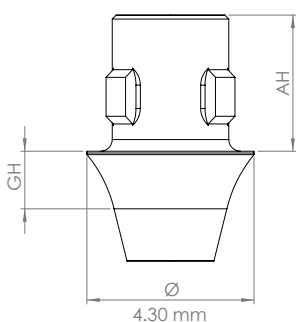
Narrow Platform

Regular Platform

Ging. Height (GH)	Abutment Height (AH)	Product No.
1 mm	3.5 mm	BLSTIBLAH35GH1NP
2 mm	3.5 mm	BLSTIBLAH35GH2NP
3 mm	3.5 mm	BLSTIBLAH35GH3NP
4 mm	3.5 mm	BLSTIBLAH35GH4NP
5 mm	3.5 mm	BLSTIBLAH35GH5NP
1 mm	5.5 mm	BLSTIBLAH55GH1NP
2 mm	5.5 mm	BLSTIBLAH55GH2NP
3 mm	5.5 mm	BLSTIBLAH55GH3NP
4 mm	5.5 mm	BLSTIBLAH55GH4NP
5 mm	5.5 mm	BLSTIBLAH55GH5NP
1 mm	3.5 mm	BLSTIBLAH35GH1RP
2 mm	3.5 mm	BLSTIBLAH35GH2RP
3 mm	3.5 mm	BLSTIBLAH35GH3RP
4 mm	3.5 mm	BLSTIBLAH35GH4RP
5 mm	3.5 mm	BLSTIBLAH35GH5RP
1 mm	5.5 mm	BLSTIBLAH55GH1RP
2 mm	5.5 mm	BLSTIBLAH55GH2RP
3 mm	5.5 mm	BLSTIBLAH55GH3RP
4 mm	5.5 mm	BLSTIBLAH55GH4RP
5 mm	5.5 mm	BLSTIBLAH55GH5RP

Bridge

Straight



Narrow Platform

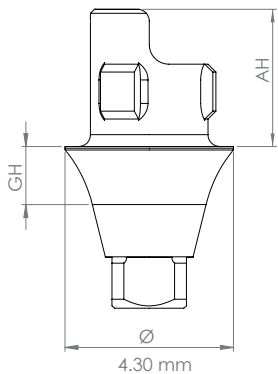
Regular Platform

Ging. Height (GH)	Abutment Height (AH)	Product No.
1 mm	3.5 mm	BLSTIBNLAH35GH1NP
2 mm	3.5 mm	BLSTIBNLAH35GH2NP
3 mm	3.5 mm	BLSTIBNLAH35GH3NP
4 mm	3.5 mm	BLSTIBNLAH35GH4NP
5 mm	3.5 mm	BLSTIBNLAH35GH5NP
1 mm	5.5 mm	BLSTIBNLAH55GH1NP
2 mm	5.5 mm	BLSTIBNLAH55GH2NP
3 mm	5.5 mm	BLSTIBNLAH55GH3NP
4 mm	5.5 mm	BLSTIBNLAH55GH4NP
5 mm	5.5 mm	BLSTIBNLAH55GH5NP
1 mm	3.5 mm	BLSTIBNLAH35GH1RP
2 mm	3.5 mm	BLSTIBNLAH35GH2RP
3 mm	3.5 mm	BLSTIBNLAH35GH3RP
4 mm	3.5 mm	BLSTIBNLAH35GH4RP
5 mm	3.5 mm	BLSTIBNLAH35GH5RP
1 mm	5.5 mm	BLSTIBNLAH55GH1RP
2 mm	5.5 mm	BLSTIBNLAH55GH2RP
3 mm	5.5 mm	BLSTIBNLAH55GH3RP
4 mm	5.5 mm	BLSTIBNLAH55GH4RP
5 mm	5.5 mm	BLSTIBNLAH55GH5RP

Ti-Base **Angled** Abutments

Crown

Angled



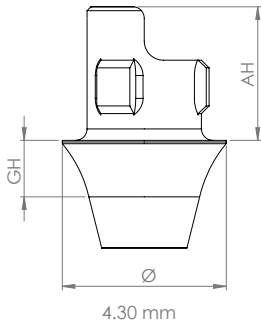
Narrow Platform ●

Regular Platform ●

Ging. Height (GH)	Abutment Height (AH)	Product No.
1 mm	3.5 mm	BLATIBLAH35GH1NP
1 mm	5.5 mm	BLATIBLAH55GH1NP
1 mm	3.5 mm	BLATIBLAH35GH1RP
1 mm	5.5 mm	BLATIBLAH55GH1RP

Bridge

Angled



Narrow Platform ●

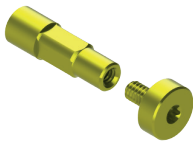
Regular Platform ●

Ging. Height (GH)	Abutment Height (AH)	Product No.
1 mm	3.5 mm	BLATIBNLAH35GH1NP
1 mm	5.5 mm	BLATIBNLAH55GH1NP
1 mm	3.5 mm	BLATIBNLAH35GH1RP
1 mm	5.5 mm	BLATIBNLAH55GH1RP



————— *“Quality is the only fact that can not be defeated by time.”*

Digital Analog



NP, M1.6
IP0059



RP, M1.8
IP0060



Multi-unit, NP & RP
IP0061

Digital Scan Bodies



Scan Body

Material: Titanium Grade V, special coating

Scan Bodies	Product No.
M1.4 (Ø 2.9 mm implant)	SB016
M1.6 (NP, Ø3.2-Ø3.7 mm implants)	SB011
M1.8 (RP, Ø4.1-Ø4.8 mm implants)	SB012



Multi-unit Scan Body

Multi-unit Scan Bodies	Product No.
Multi-unit (NP&RP)	SB013

NP : Narrow Platform (M1.6, Ø3.2 - Ø3.7 mm implant platform)

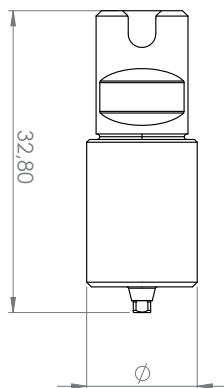
RP : Regular Platform (M1.8, Ø4.1 - Ø4.8 mm implant platform)



PRE-MILL ABUTMENTS

Pre-milled abutments are used to create customized abutments in cases where stock abutments are not the solution.

Pre-mill Abutments



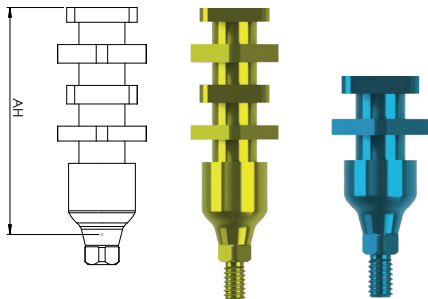
Platform	Diameter (mm)	Product No.
Narrow (For \varnothing 3.2- \varnothing 3.7 mm implants)	\varnothing 12	BLPRA12NP
Narrow (For \varnothing 3.2- \varnothing 3.7 mm implants)	\varnothing 16	BLPRA16NP
Regular (For \varnothing 4.1- \varnothing 4.8 mm implants)	\varnothing 12	BLPRA12RP
Regular (For \varnothing 4.1- \varnothing 4.8 mm implants)	\varnothing 16	BLPRA16RP
Slim (For \varnothing 2.9 mm implants)	\varnothing 12	BLPRA12SP
Slim (For \varnothing 2.9 mm implants)	\varnothing 16	BLPRA16SP



IMPLANT LEVEL IMPRESSION COMPONENTS & ANALOGS

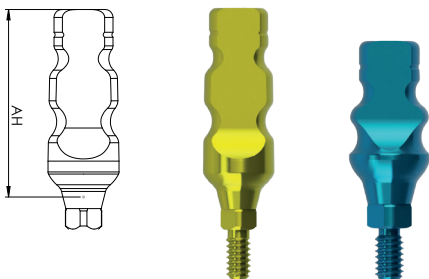
Impression Components and Analogs

Impression Post Open Tray



	Height (AH)	Product No.
Narrow Platform	8.5 mm (short)	IP0013
	15 mm (long)	IP0001
Regular Platform	8.5 mm (short)	IP0015
	15 mm (long)	IP0003

Impression Post Closed Tray



	Height (AH)	Product No.
Narrow Platform	9 mm (short)	IP0017
	12 mm (long)	IP0005
Regular Platform	9 mm (short)	IP0019
	12 mm (long)	IP0007



Product No.
IP0009

Product No.
IP0010

Impression Post Plastic Caps

Analogs



Product No.
IP0011

Narrow Platform



Product No.
IP0012

Regular Platform



Product No.
IP0057

Locator Analog*



Product No.
IP0058

Locator Impression Post*

*These products are used with only Loc-bil® abutments

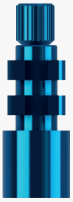


ABUTMENT LEVEL IMPRESSION COMPONENTS & ANALOGS

Screw Retained (Multi-unit) Impression Components and Analogs

Impression Post Open Tray

Product No. IP0026



Impression Post Closed Tray

Product No. IP0028



Plastic Coping

Product No. IP0033



Plastic Coping

Product No. IP0034



Crown

Bridge



*Straight Analog

Product No. IP0030

*15° Angled Analog

Product No. IP0031

*Angled and straight analog platforms are absolutely the same and can be used in place of another. (NP&RP)

INSTRUMENTS & ACCESSORIES

Surgical Cassette



Product No. CERS

The surgical set and its content professionally developed by our consultant team has been designed to be easily used by all clinicians and to meet all requirements for surgery.

Material: Polyphenylsulfone (PPSU)

SURGICAL CASSETTE CONTENTS

Accessories

Product No.

7 mm



Marking Drill

PDSS

Ø 1.8



Round Bur

PDRB



Drill Extension

DEXT



Alignment Pin

100AP



Ø 3.2 Parallel Pin

101PP



Ø 3.7 Parallel Pin

102PP



Ø 4.1 Parallel Pin

103PP



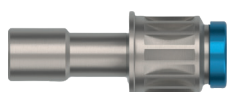
Ø 4.8 Parallel Pin

104PP



Ratchet Adapter (Long, 24 mm)

TSP24



Ratchet Adapter (Medium, 19 mm)

TSP19



Ratchet Adapter (Short, 12 mm)

TSP12



Contra-angle Adapter

TSPA21



SCS Driver (Long, 28 mm)

SCSA28



SCS Driver (Medium, 23 mm)

SCSA23



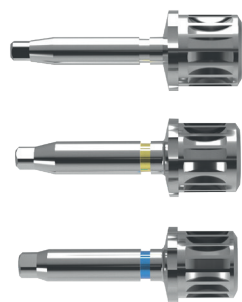
SCS Driver (Short, 16 mm)

SCSA16



SCS Driver (Angled)

ASCSA



Implant Removal Driver (SP, Ø 2.9 mm)

IDPSP

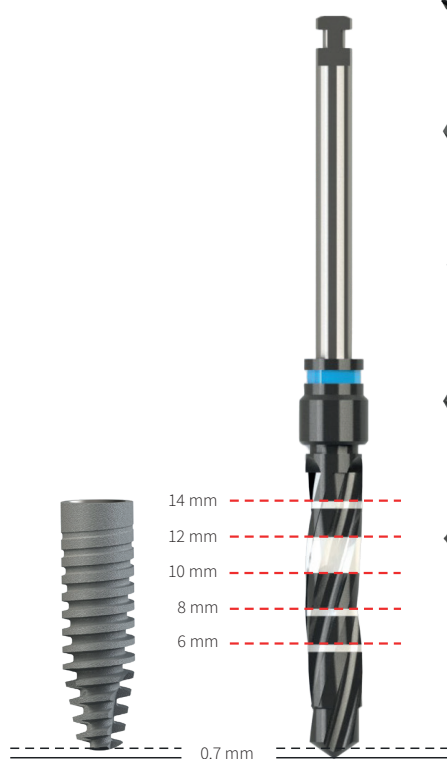
Implant Removal Driver (NP)

IDPNP

Implant Removal Driver (RP)

IDPRP

Drills



Pilot (Short)

Ø2.35

Ø2.9 Final

PD22



Pilot (Long)

Ø2.35

Ø2.9 Final

PDL22



Short

Ø2.7

Ø3.2 Final

ID32



Long

Ø2.7

Ø3.2 Final

IDL32



Short

Ø3.2

Ø3.7 Final

ID37



Long

Ø3.2

Ø3.7 Final

IDL37



Short

Ø3.6

Ø4.1 Final

ID41



Long

Ø3.6

Ø4.1 Final

IDL41



Short

Ø4.3

Ø4.8 Final

ID48



Long

Ø4.3

Ø4.8 Final

IDL48



Cortical

Ø2.9

Ø2.9

CD29



Cortical

Ø3.2

Ø3.2

CD32



Cortical

Ø3.7

Ø3.7

CD37



Cortical

Ø4.1

Ø4.1

CD41



Cortical

Ø4.8

Ø4.8

CD48



Bone Profiler

Ø4.8

Ø4.1- Ø4.8

BLPONP



Bone Profiler

Ø4.8

Ø3.2- Ø3.7

BLPORP

Deep Gauge

Product No. DG



Torque Wrench

Product No. TRCHTV2



Hand Driver

Product No. HS



Gode

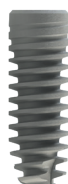
Product No. GD

STOPPER KIT

Product No. DSK



12 mm



Implant

Ø 3.2

Length

Diameter

Product No.



14mm



12mm



10mm



8mm



6mm

Ø3.2

Ø3.2

Ø3.2

Ø3.2

Ø3.2

DS3214

DS3212

DS3210

DS3208

DS3206

Ø 3.7

Length

Diameter

Product No.



14mm



12mm



10mm



8mm



6mm

Ø3.7

Ø3.7

Ø3.7

Ø3.7

Ø3.7

DS3714

DS3712

DS3710

DS3708

DS3706

Ø 4.1

Length

Diameter

Product No.



14mm



12mm



10mm



8mm



6mm

Ø4.1

Ø4.1

Ø4.1

Ø4.1

Ø4.1

DS4114

DS4112

DS4110

DS4108

DS4106

Ø 4.8

Length

Diameter

Product No.



14mm



12mm



10mm



8mm



6mm

Ø4.8

Ø4.8

Ø4.8

Ø4.8

Ø4.8

DS4814

DS4812

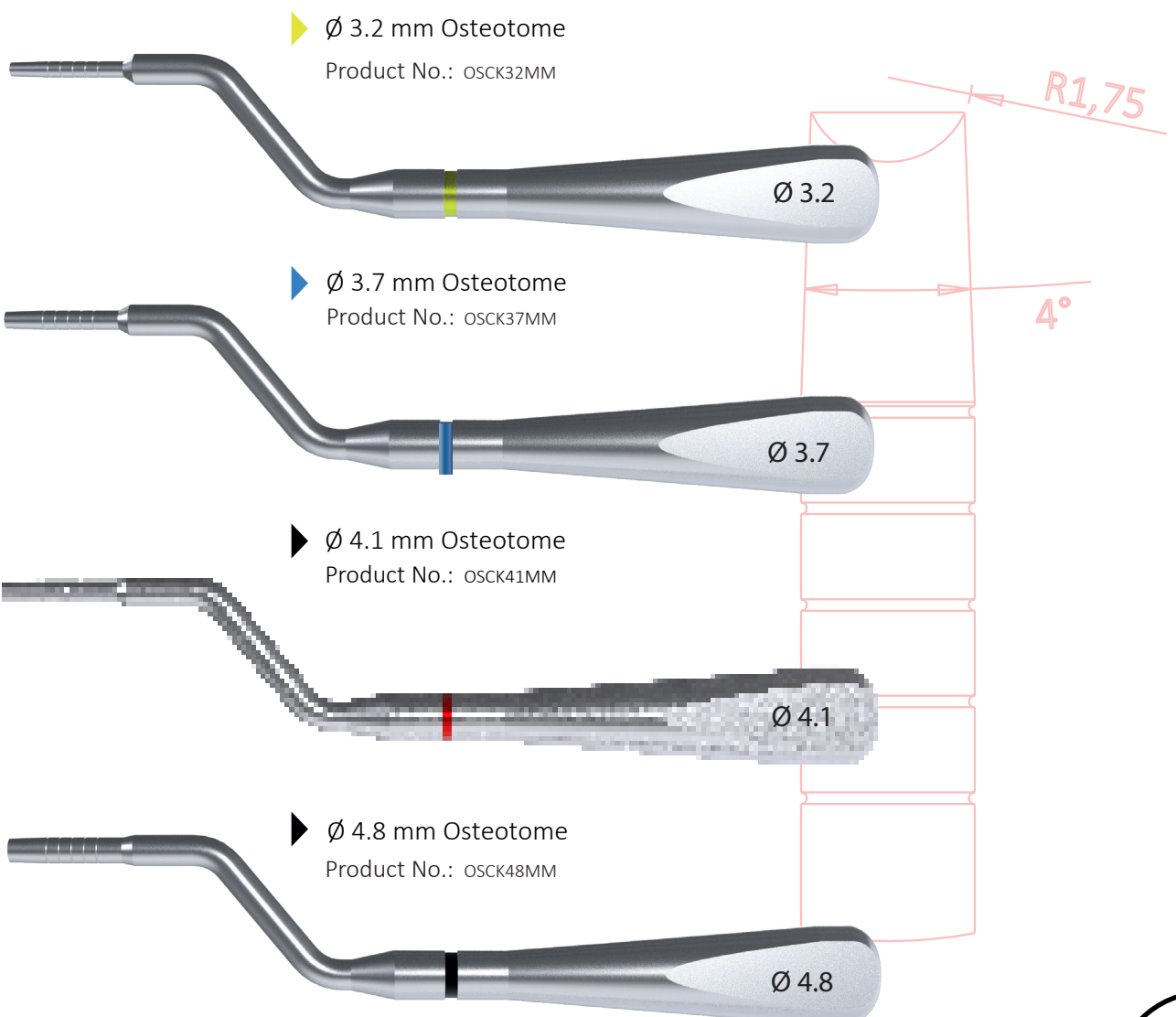
DS4810

DS4808

DS4806

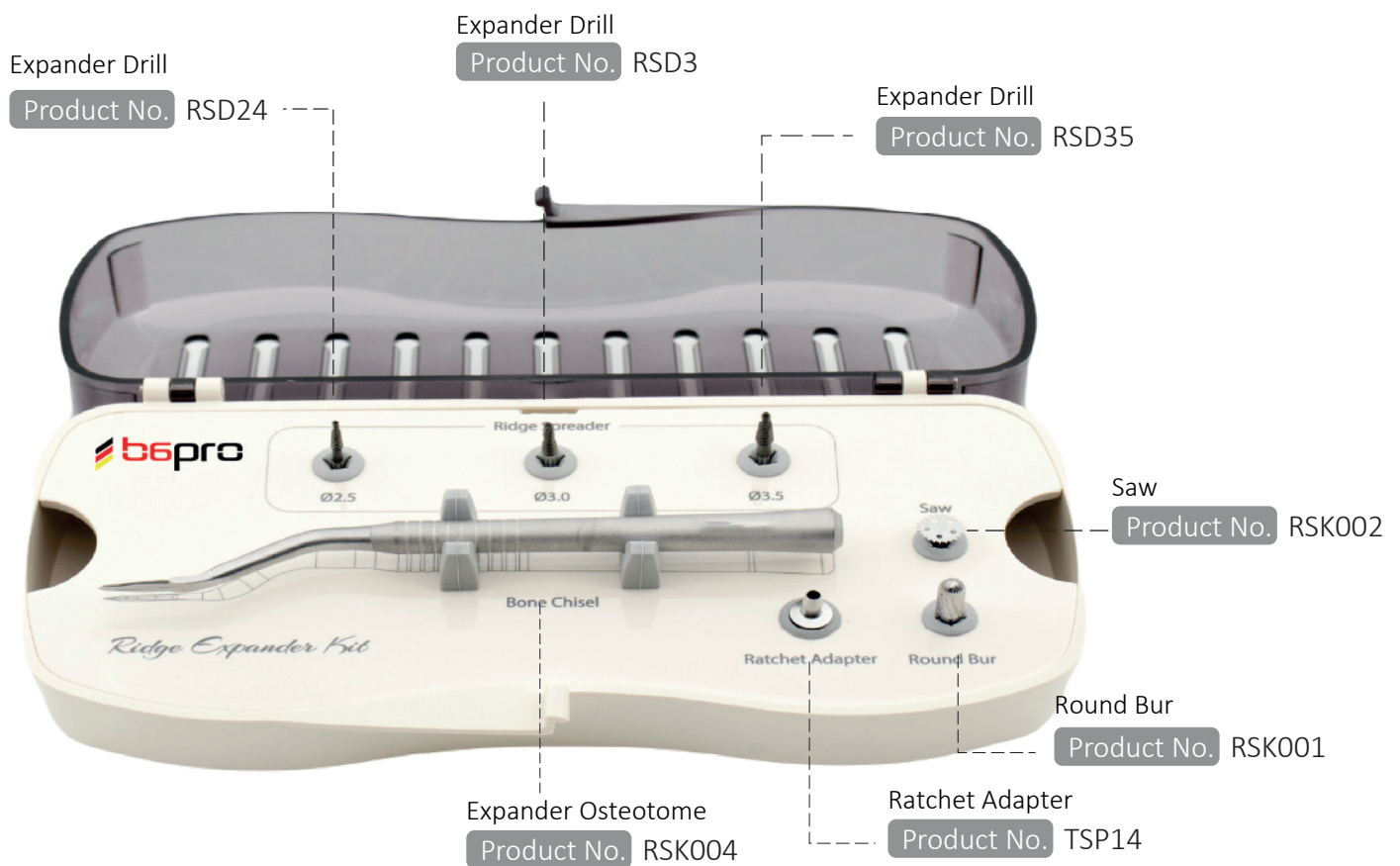
SINUS OSTEOTOME KIT

Product No. OSK



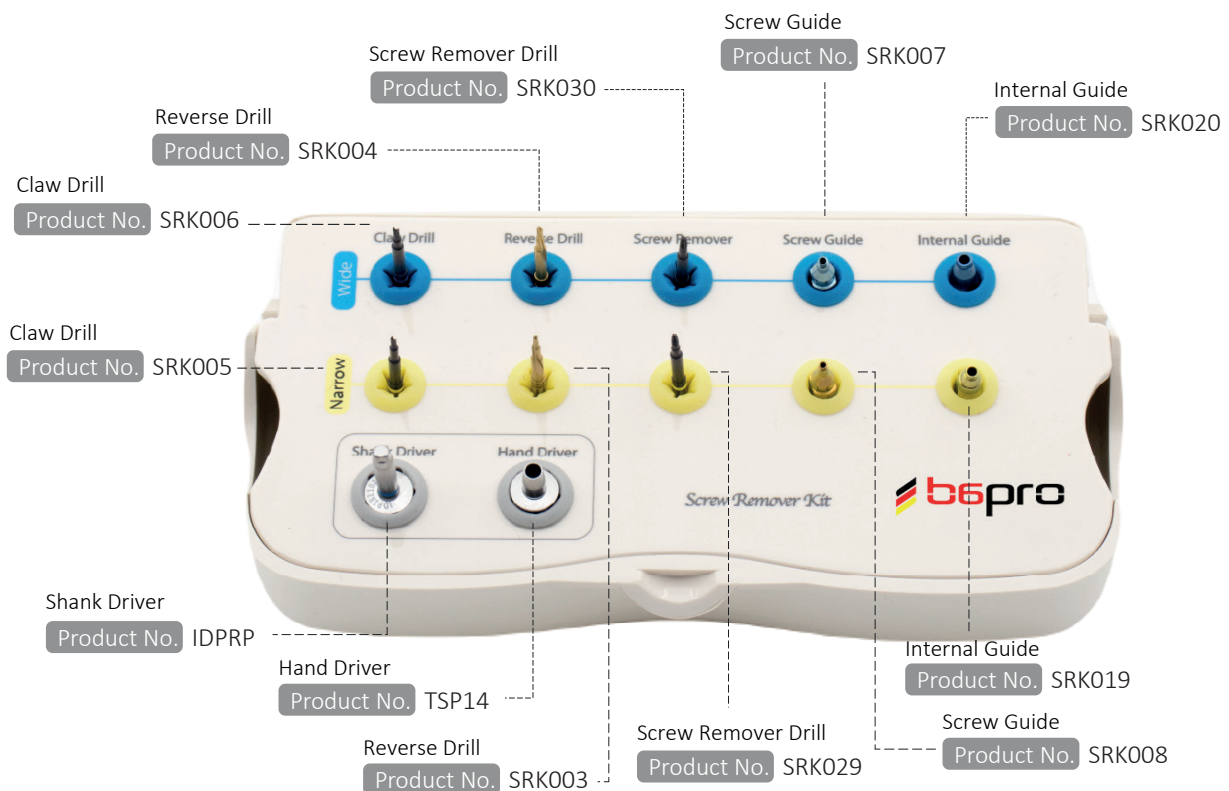
RIDGE EXPANDER KIT

Product No. RSK



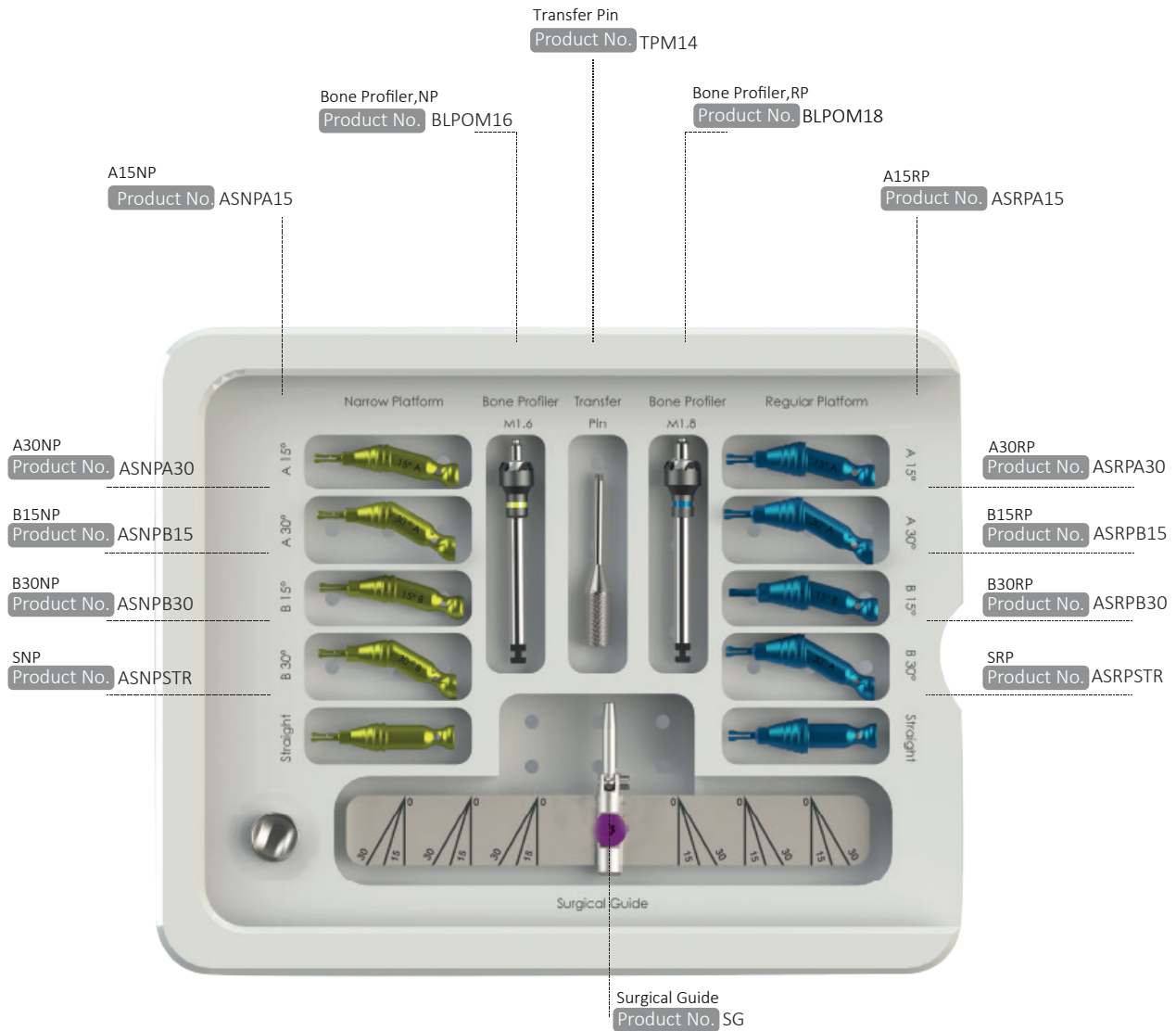
SCREW REMOVAL KIT

Product No. SRK



ALL ON FOUR & ABUTMENT SELECTION KIT

Product No. AOFASK



Our Digital Solution Partners



SmartPeg Reference Guide
Valid from December 2018|25016-67

Implant Company	Model	Diameter (mm)	SmartPeg	New
B6pro	Bone Level Implant	3.2 - 3.7	100402	Type21
	Bone Level Implant	4.1- 4.8	100480	Type49

PLANMECA



exocad

Everything is much easier and safer with our digital solution partners.

NOTES



Imposs Medical GmbH Grafenberger Allee 293 40237 Düsseldorf – **GERMANY**
info@b6pro.com

www.b6pro.com